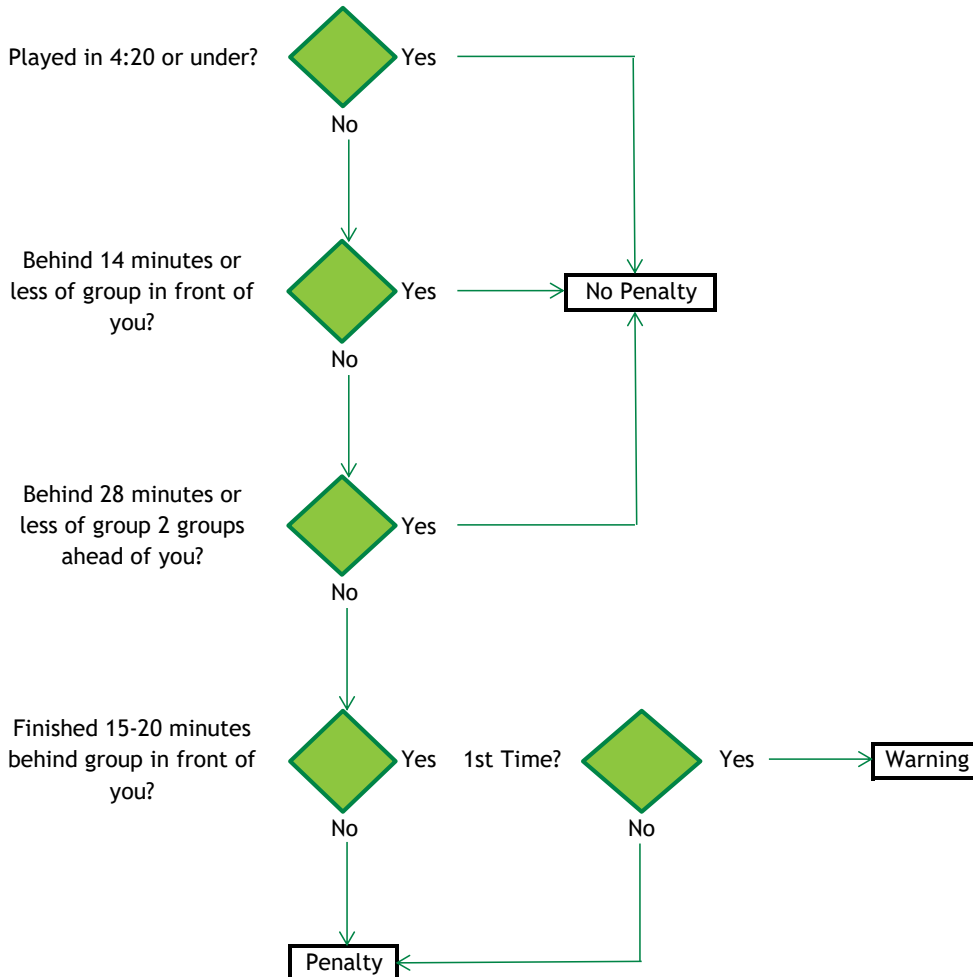


Cleveland Industrial Golf League

CIGL - Slow Play Penalty Decision Tree

(Effective 2022 Season)



1st Occurance: Handicap cut 1 stroke for next event

2nd Occurance: Handicap cut 2 strokes for next event

3rd Occurance: Handicap cut 3 strokes for next event and team cut 10 points from total years points

4th Occurance: Handicap cut 4 strokes for next event and team cut 20 points from total years points

Note: For every additional 10 minutes a player is late, an additional stroke will be added to the penalty for that day.

"Ready Golf" suggestions:

- * Be on time for your start time
- * Don't sit in your cart waiting to tee off when rest of foursome is teeing off
- * Keep your pre-shot routine short
- * Prepare for your shot before you get to your ball
- * Keep an eye on the group in front of you
- * Take a couple of clubs you may need with you if you need to walk to your ball
- * Drop cart partner at his ball and continue to your ball
- * Continuous putting
- * Be helpful to other players in your group
- * Don't be a spectator - get to your ball and hit it
- * If you are falling behind and are done putting go to next tee ahead of your foursome and tee off
- * If in doubt of your ball being lost or out of bounds HIT A PROVISIONAL